



Installing your Certificate on I-Planet Web Server

When you receive your certificates there will be your site certificate (named **yourdomain.crt**) plus 2 others, these 2 must be installed as a certificate chain.

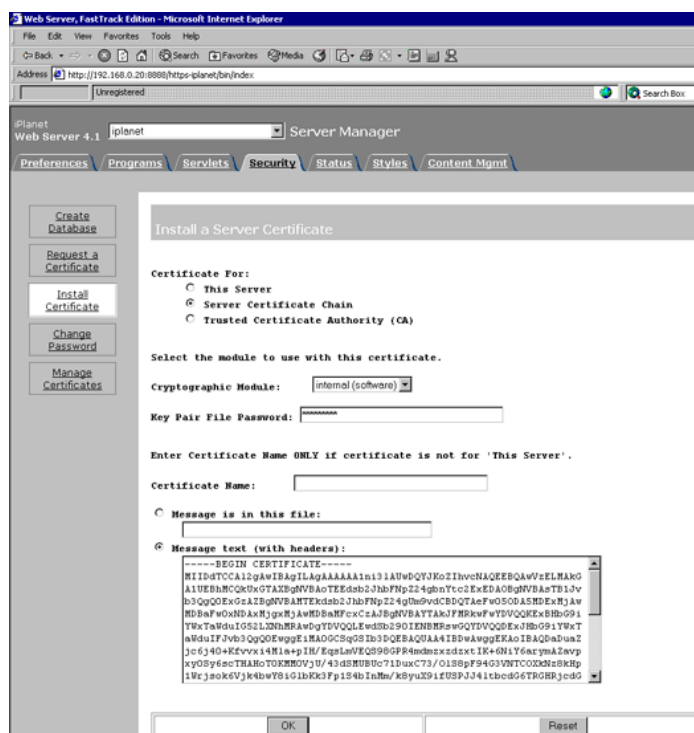
Sign onto the Webserver and select the server to manage.

Select the Security tab and then Install Certificate.

INSTALL THE CERTIFICATE CHAIN

- ❖ Open the **root CA-certificate** in a text editor.
- ❖ Select Server Certificate Chain, enter the password and copy the text from the **root CA-certificate** to the Message Text box (including the BEGIN and END lines), then click OK.
- ❖ Accept the certificate.

NOTE: Do not shutdown or restart the server until all steps have been completed.



Repeat the steps above using the text from the **Intermediat root CA**

For the site certificate again repeat the steps above, but this time choosing This Server instead of Server Certificate Chain.



At this stage all the certificates are installed and SSL now needs to be activated.

Select the Preferences tab and then Encryption On/Off.

Set encryption to 'On' and Port to 443, click OK, then

Save and Apply.

Don't forget to shutdown and restart the server.