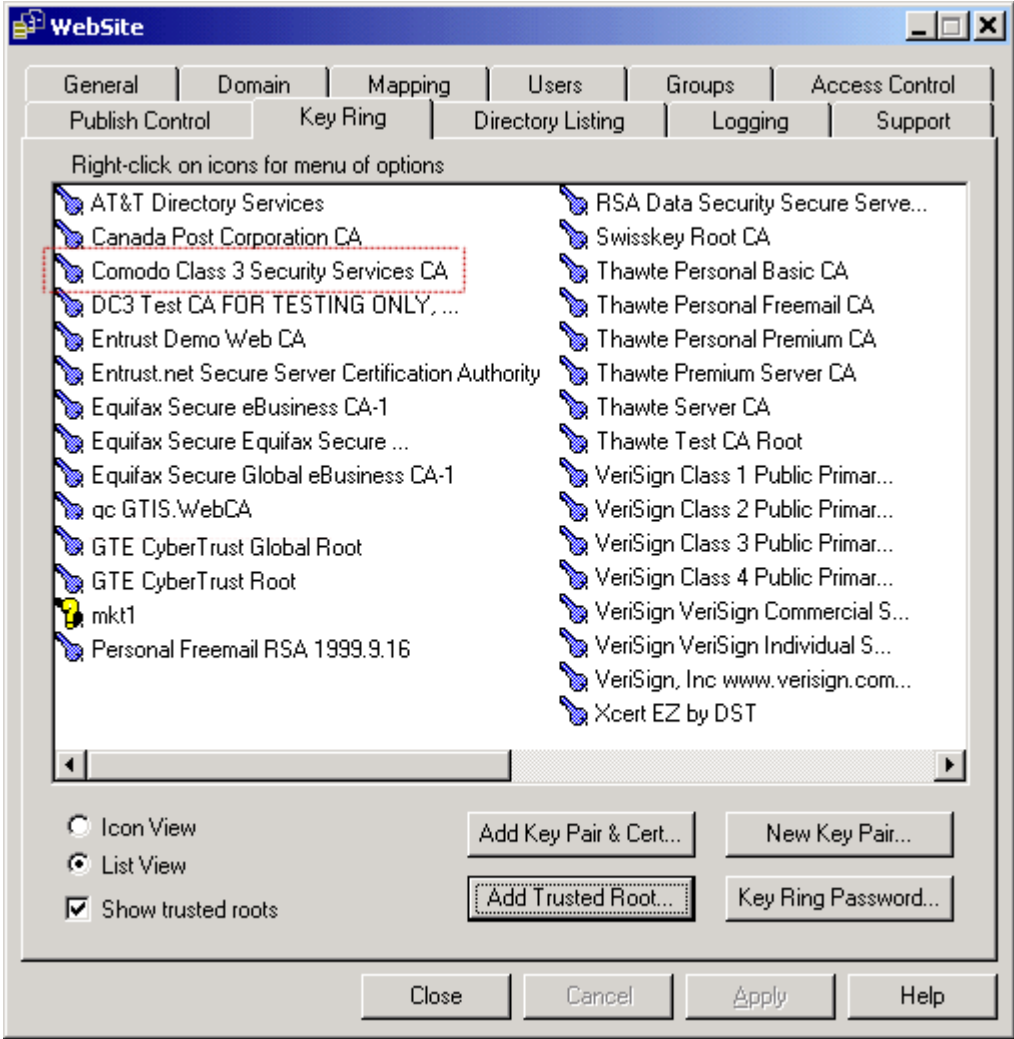




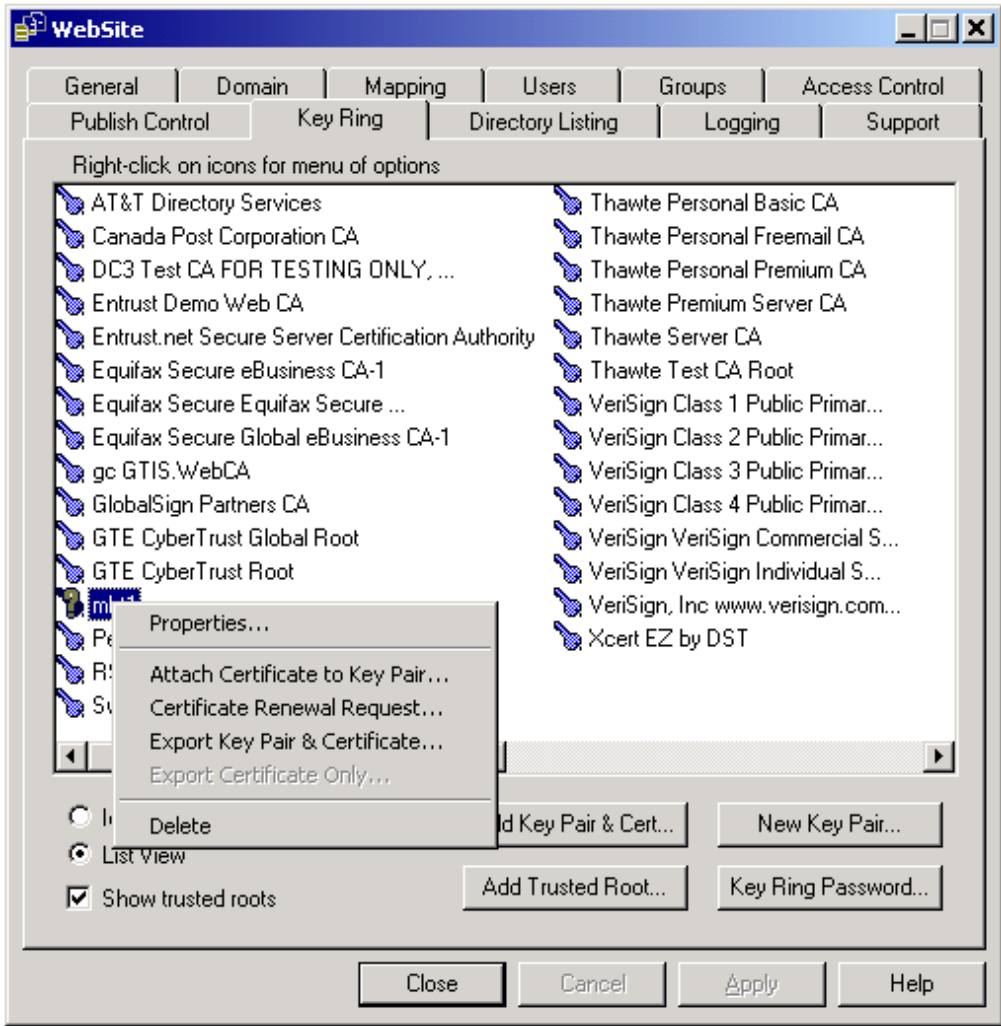
Installing your Certificate with Website Pro 3.x

When your certificate is issued you will receive 3 certificates:
Yourdomain.crt
Entrust SecureSarverCA.crt or UTNAddTrustroot CA.crt
AAACertificateServices_2.crt or AddTrustExternalCAroot.crt

- Add the *ComodoClass3SecurityServicesCA.crt* certificate as **Trusted Roots**:



- Then attach each certificate in turn to your website's Key Pair in the following order. At this point your Key Pair will be black.:
Yourdomain.crt
Intermediate CA certificate
Root certificate



- Your Key Pair will now turn green.
- Stop and Start the server, your site can now be found using the **https** entry