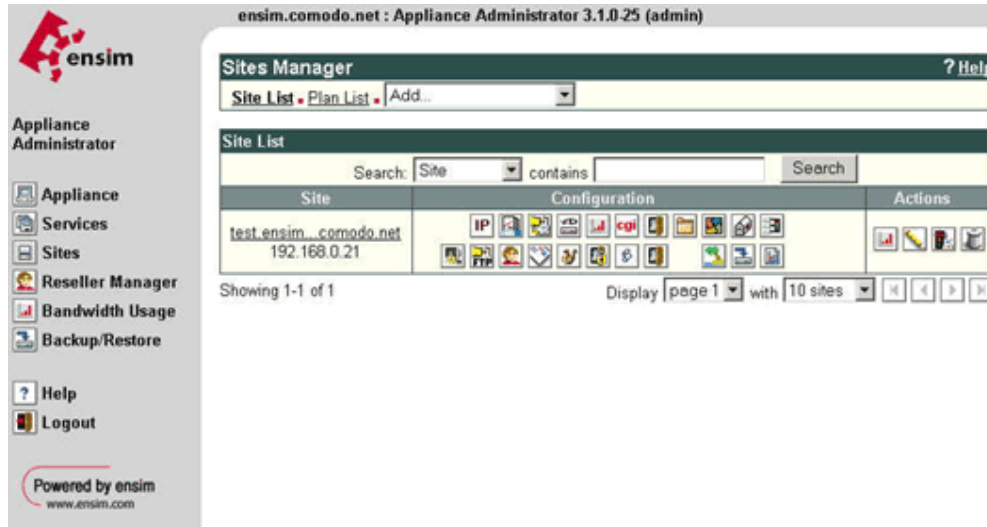


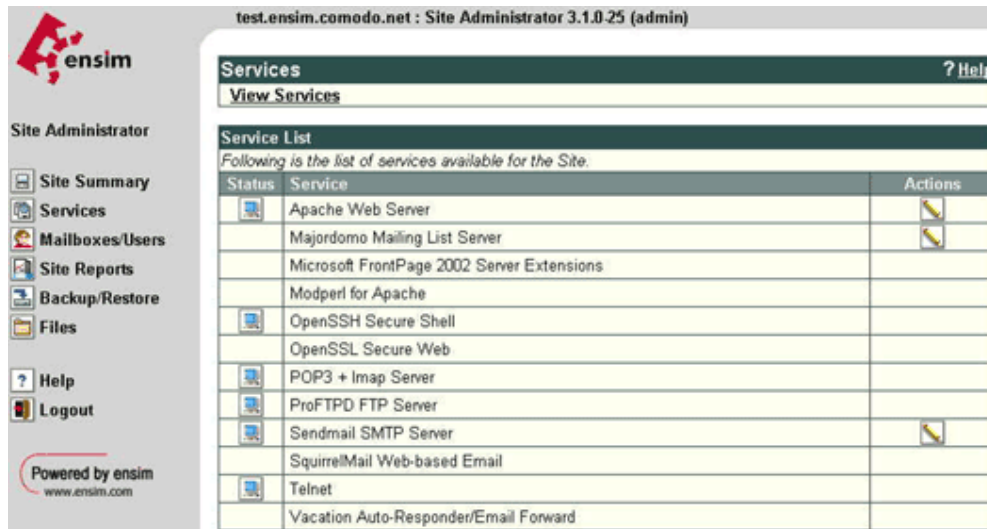


Generating a Certificate Signing Request (CSR) using Apache via Ensim Webppliance 3.1.x

Login to the **Site Administrator** or **Appliance Administrator** and select the site to administer.



Select **Services**



Select the **Actions** box next to **Apache Web Server** and then select **SSL Settings**



test.ensim.comodo.net : Site Administrator 3.1.0-25 (admin)

ensim

Site Administrator

- Site Summary
- Services
- Mailboxes/Users
- Site Reports
- Backup/Restore
- Files
- Help
- Logout

Powered by ensim
www.ensim.com

Apache Web Server Manager ? Help

Configuration • Log Files • SSL Settings • Protect Directories • Manage Groups • Manage Users

Configuration	
ServerName	www.test.ensim.comodo.net
ServerAdmin	bob@comodo.net
DocumentRoot	/var/www/html
ScriptAlias	/cgi-bin/ /var/www/cgi-bin/
UserDir	/home/*/public_html

Select **Generate** and fill in the required details, the site name will automatically be entered into the Common Name field, ensure this is correct and contains the Fully Qualified Domain Name (e.g. secure.company.com, www.company.com, support.company.com)

test.ensim.comodo.net : Site Administrator 3.1.0-25 (admin)

ensim

Site Administrator

- Site Summary
- Services
- Mailboxes/Users
- Site Reports
- Backup/Restore
- Files
- Help
- Logout

Powered by ensim
www.ensim.com

Apache Web Server Manager ? Help

Configuration • Log Files • **SSL Settings** • Protect Directories • Manage Groups • Manage Users

Generate SSL Certificate	
2-Letter Country Code	<input type="text"/>
State/Province <i>(Should be spelled out in full, e.g. California not CA)</i>	<input type="text"/>
City	<input type="text"/>
Company	<input type="text"/>
Organization <i>(e.g. Marketing, Finance, Sales)</i>	<input type="text"/>
Common Name	test.ensim.comodo.net
Email	<input type="text"/>

Save Reset Cancel

Select **Save** and you are presented with the RSA Key and the **Certificate Request** (CSR)



test.ensim.comodo.net : Site Administrator 3.1.0.25 (admin)

ensim

Site Administrator

- Site Summary
- Services
- Mailboxes/Users
- Site Reports
- Backup/Restore
- Files
- Help
- Logout

Powered by ensim
www.ensim.com

Apache Web Server Manager ? Help

Configuration • Log Files • **SSL Settings** • Protect Directories • Manage Groups • Manage Users

Status: Successful Result: Certificate generated. Details

SSL Settings

Key

```
-----BEGIN RSA PRIVATE KEY-----
MIICXQIBAAKBygQDMVQQRP11qu8Kxj5k8IT0sM5qK32vQG03YhC6mRvDQebsx
1B9SLTxh6F50FPn8ZkZwLbts6wxx0IBmcyBdr1Me4HfMmncAPXG03UNHumA9pV
ITMqVpD1bg7EVR99R61grUpaRnEhITy+egHJwmcBvSv6zkiBnvRwIDAQAB
AoGABgk4v4bJQ2NPF175aTDmMg01mNgn76R6Q1eRLyPyQqUxOLMgPZKp2sa
FR0MRg+/1nODPP7Vf1za6F6kQ98UA1JyeLm0R3VtvmkG30124FafQM7vzkkCzw
ANB0psmHOMBKMXca3rffIEA0Qg+toDqexLsGLYJ06yEkCQDQ3GJ+2mc3V8h1
S6X2NnGMANNACpRvz0T9e6GQDNvN8PGLoUgVlqwpYL9D8LhGvY1CgSOVJ0cx
L86d7tz9AJEA3eS2zyHD1Wed@MxKnuFVWCscPHvHzT90N6FrSaEHzZ8UKzJQ2
VvX4dA90m5Fh3k+J87LGMdS71ykwBAKSyEvJAvcOX08ng3UgTmV87x
GLzYhe8gkKedtdqppnvs+HDPJUKYdSNangj4CsmDd8EDfIq44sg3kCGHeK
nyqkYb6MmNLKwLUBkYSLSPHdHmHIEqBXLjOf0zR4JCKSTZHpp5Cr9M
SMggHMTxKc7g+5sxTgcCQCBOIDP34jHnA01Q7KcXVOD3NomiMup8h9GGD+
SbzSPEixZck28wZvsty2kVhAicZrU690e8weRmmq
-----END RSA PRIVATE KEY-----
```

Request

*If you haven't got a certificate from any Certification Authority please send the following request to a Certification Authority to get a Security Certificate. When you are asked for the 'Web Server Software' type enter 'Apache Freeware'.
After you get a Security Certificate, click 'Import' button and copy the Certificate to the text area and save it.*

```
-----BEGIN CERTIFICATE REQUEST-----
MIB3CCAUcCAQAwwgZ0xCzAUBgNVBAYTAkdCMRiowFQYDVGQGEw5XZDNDfVontz
eGlyZTERMA8GA1UEB-MGQhZGZvcnQzDzANBgNVBAoTBkNvV98kbzEQMA4GA1UE
CwMhUjVvcG9ydEeMBwGA1UEAxMVdGVzZC5bnNpSSB21vZG8ubmV0MR0wHQYJ
KoZhrvcNAQEBFhBnYXJyeUBj21vZG8ubmV0MR0wMA0GCqG5Sb3DQEBAQUAA4GN
ADCBGQKgQDMVQQRP11qu8Kxj5k8IT0sM5qK32vQG03YhC6mRvDQebsx1B9S
LTxh6F50FPn8ZkZwLbts6wxx0IBmcyBdr1Me4HfMmncAPXG03UNHumA9pVITMq
VpD1bg7EVR99R61grUpaRnEhITy+egHJwmcBvSv6zkiBnvRwIDAQABoAAw
DQYJKoZhrvcNAQEEBQADgYEAmlRRLD0Cusb9u2QibBITEzbN0wq9CkaRdZ1BNBt
ID1wC9w6LdMY75BXEsDry9osVgq358uTY2BP3VxK9C70kb7AKUgglWtSKLcSK2D
eQryp+ha0L7ZVCsrOh6VLzOPWOh1+X86NsBvDM9Ck0FdvTQuzUs78F0su
Pco=
-----END CERTIFICATE REQUEST-----
```

Subject

Copy the **Certificate Request** into a text editor, this will be required when you purchase your certificate.
Do not delete this request as it will be needed during the installation of your SSL certificate