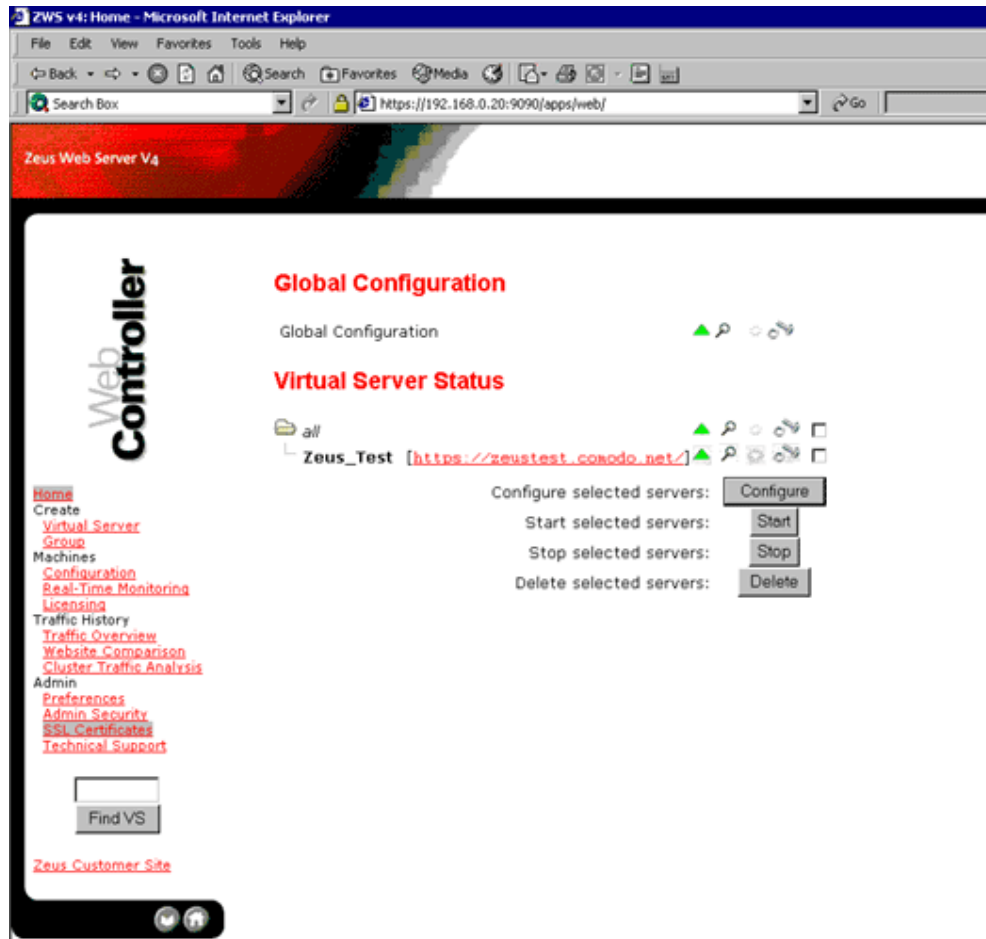




Generating a Certificate Signing Request (CSR) using Zeus

Login to the web server

Select **SSL certificates**



Against **Creating a Certificate Set** select **Create**



Certificate Set Management

Use this page to create and manage SSL certificate sets. These are used to simplify the configuration of SSL certificate set is composed of an SSL certificate and a private key.

Certificate Sets

Set name	Site	Signed by	Expires	Signing actions	Delete?
Admin_Server	192.168.0.20	(self-signed)	08 Jul 2003	Generate CSR	<input type="checkbox"/>
Garry	zeustest.comodo.net	Comodo Limited	08 Aug 2008	Replace certificate	<input type="checkbox"/>
zeustest.comodo.net	zeustest.comodo.net	(self-signed)	08 Jul 2003	Generate CSR	<input type="checkbox"/>

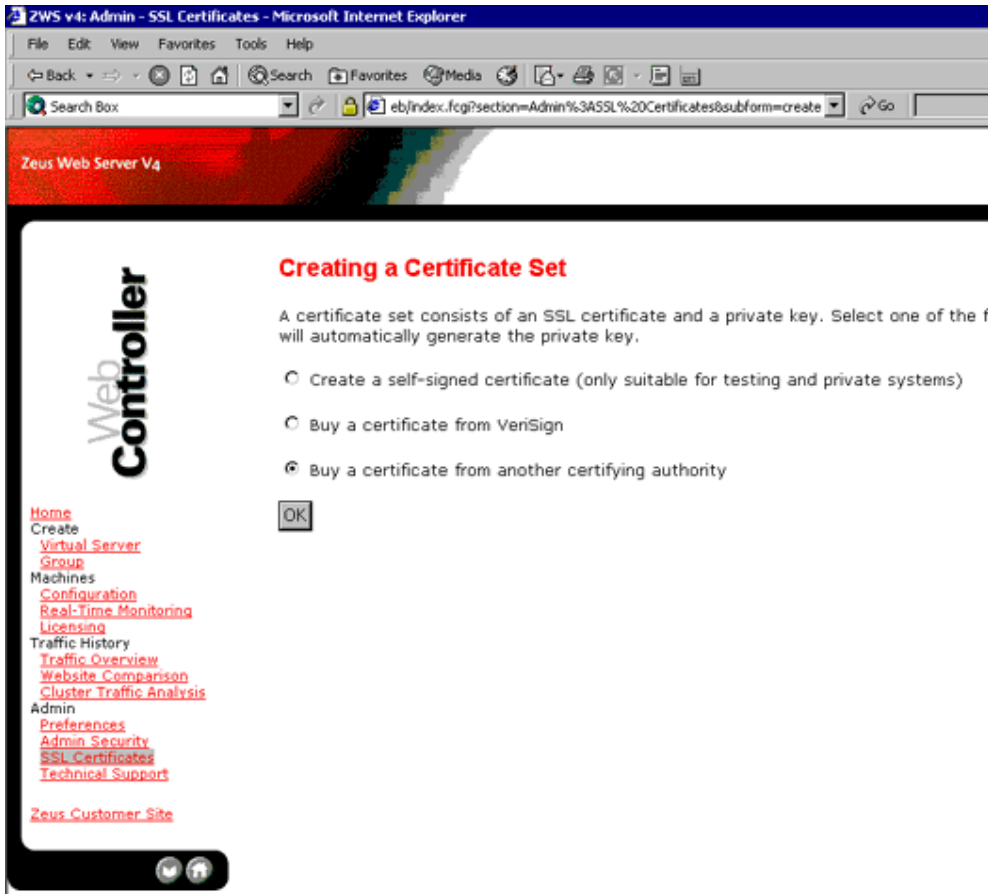
Delete selected set(s):

Creating a Certificate Set

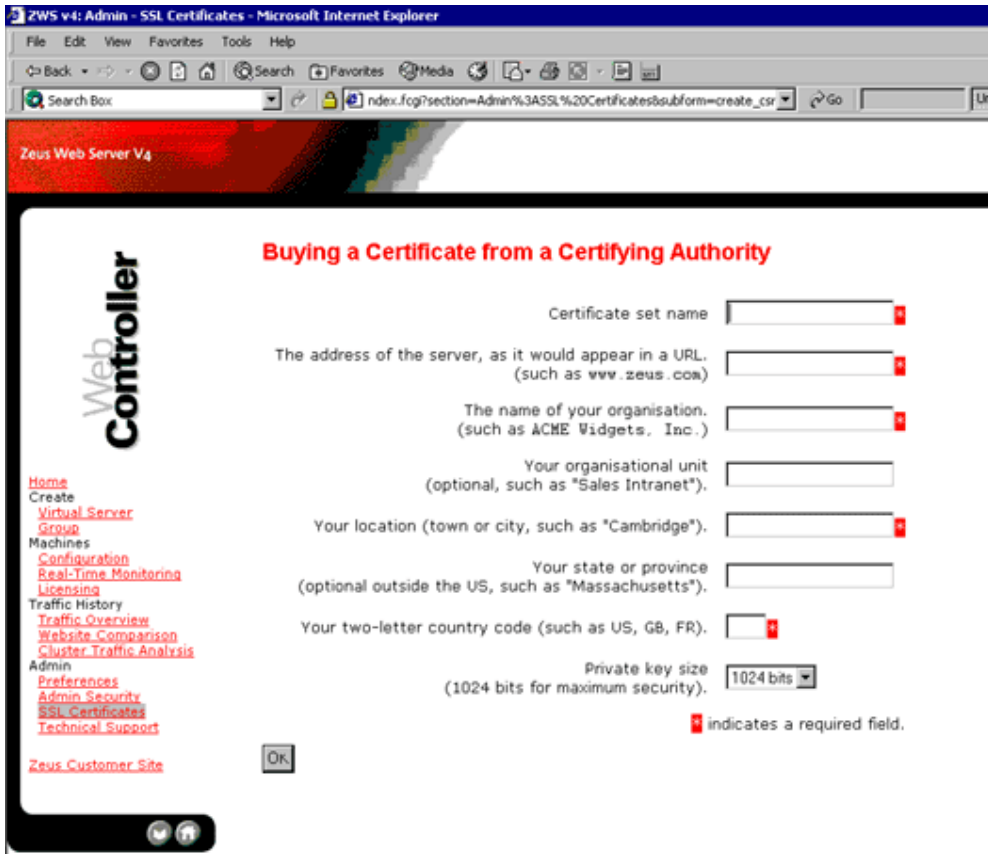
Create a new certificate set:

Import an existing certificate and private key:

Select **Buy a Certificate From Another Certifying Authority**, then click **OK**



Complete the fields with your specific information, then click **OK**



Copy the **Certificate Singing Request** (CSR) text into a text editor for later use when requesting your certificate